

DESIGN PRESENTATION SKILLS FOR KITCHENS, BATHROOMS AND INTERIORS



12 weeks part time or
6 weeks full time

Nationally Accredited Units of Competency



Distance Education

About the Course

This course is focused on the selection of products and materials for kitchens and bathrooms and the development of material boards, concept boards and mood boards.

It draws on the elements of principles of design to select appropriate materials and colours and present selections using both physical and electronic methods. 3D CAD is used as a communication tool to present to clients.

Fees and Payment

Administration Fee:	\$200
Course Fee:	\$1,120
Total Fees:	\$1,320

\$375 is paid with enrolment form and the remainder of the course fees can be paid upfront or by Payment Plan in instalments, either monthly or twice per month for 2 months.

Course Commencement

Courses start on the 1st Monday of each month. Please check with the DTA office to confirm the availability of dates.

Entry Requirements

- » Suitable for those with no industry experience and those with years of experience
- » Must be 18 years or older and residing in Australia
- » Must not be on a Student Visa
- » Year 10 (or equivalent) level English and basic maths calculations and measurements
- » Computer literate in basic Microsoft or equivalent programs

Delivery Mode and Duration

This course is delivered by distance education. There is no face to face class attendance. Students can be located anywhere in Australia.

Option	Duration	Hours per week
Part time	12 weeks	12 hours
Full time	6 weeks	24 hours

Students can progress at their own pace and if they have more time available, they could finish earlier.

The amount of time spent by individual students will vary depending on their existing skills and knowledge. Experienced designers may take less time and those new to the industry may choose to participate in optional activities to learn and practice new skills.

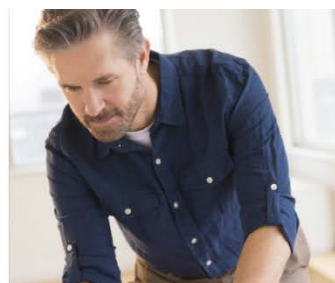
Who would do this course?



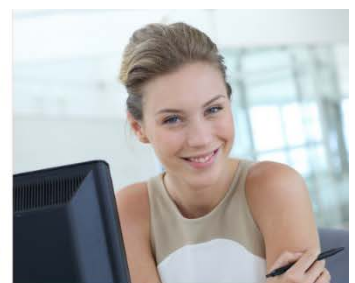
Interior Designers or Interior Decorators looking to expand their design presentation skills



Cabinet Makers and Builders wanting to expand their design knowledge and/or get a recognised design credential



Experienced **Kitchen and/or Bathroom Designers** looking to expand their design presentation skills



Those with an interest in designing residential interiors wanting to enter a rewarding industry or for personal interest



Course Outcomes

Upon successful completion of this course, participants can either:

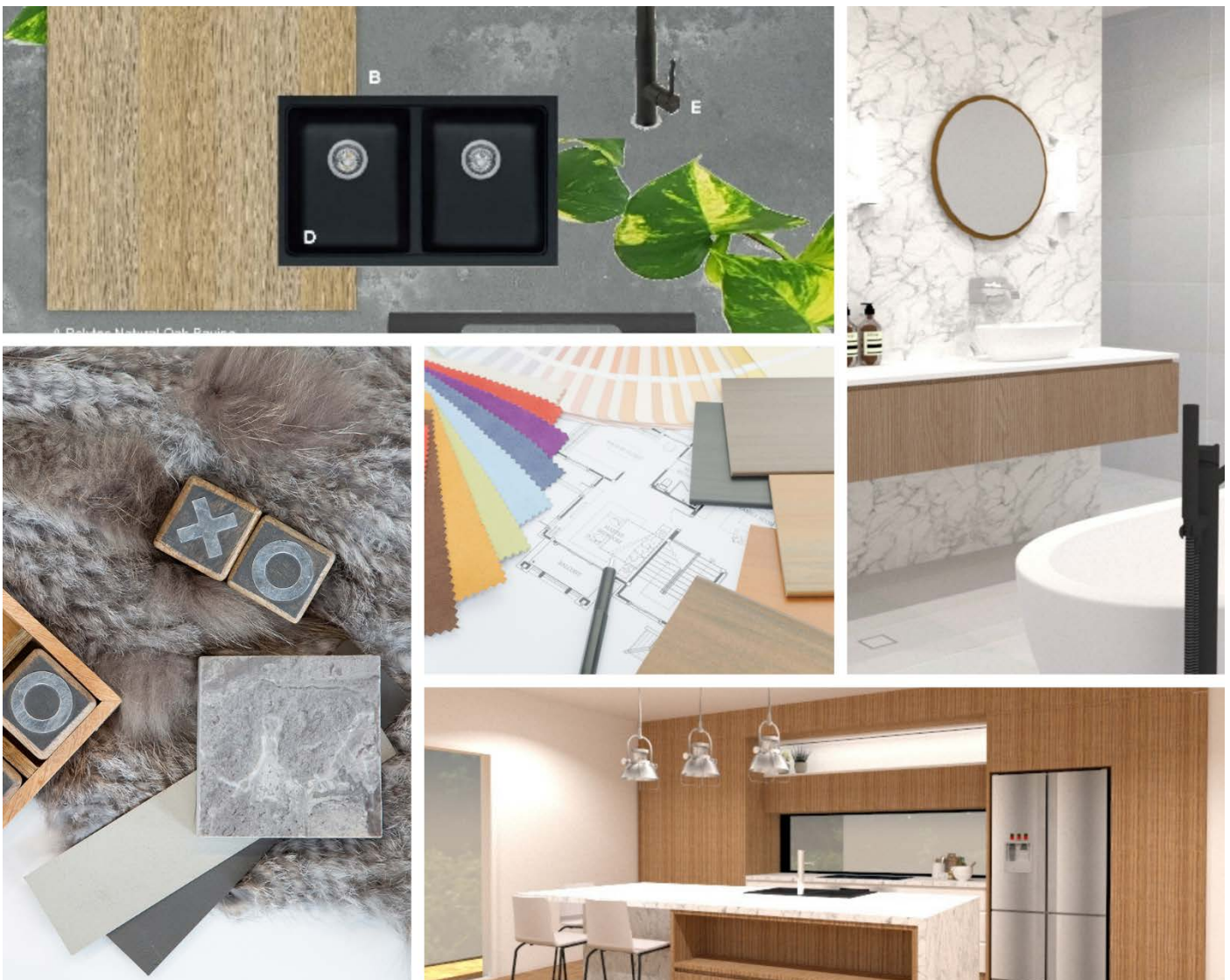
- » Continue your study before the end of your enrolment period by enrolling in the Certificate IV in Kitchen and Bathroom Design (MSF40318) with DTA and receive 2 direct credit transfers and full credit for fees paid, or
- » Be awarded a Statement of Attainment for the units completed which can be used as direct credit for a range of Nationally Accredited courses such as the Diploma of Interior Design, the Certificate IV in Interior Decoration and the Certificate IV in Kitchen and Bathroom Design.

Course Structure

This course includes the following units of competency:

- » BSBDES302 Explore and apply the creative design process to 2D forms
- » MSFID4015 Prepare a materials board for client presentation

This course also includes 3D CAD for kitchens and bathrooms, creating concept drawings in 3D including renders and video fly-throughs.



Support

Your Course Coordinator is your first point of contact and can direct you to a support option to suit your learning style and needs.

Your Course Coordinator can be contacted by phone, text and email to provide support. They may also further assist by directing you to:

- » learning resources which may include video, text, images, case studies, diagrams, graphics, webinars or explanatory information
- » book a time with a trainer to discuss or explain (10 or 20 minute sessions available weekdays.)

Learning

- » accessing information and application of learning in self directed study time. This may include reading through resources, completing learning activities conducting independent research
- » electronic resources are provided online which may include video, text, images, case studies, diagrams, graphics or explanatory information
- » pre-recorded video classes you can watch at a time to suit you
- » Resources can be printed at home if required
- » Private phone tutorials
- » Private remote classes with a trainer where the trainer can also access your computer if required

Assessment

You will be assessed in the following ways throughout the course:

- » written assessments which may include multiple choice and short answer questions
- » project assessments which may include written reports, design documentation and portfolio of work
- » CAD assessments which may include drawings, renders and electronic files
- » observation assessments where the student makes a video and or audio recording of them undertaking an activity
- » all assessments are submitted via the DTA dropbox

Recognition of Prior Learning

Skills and knowledge through either previous training or experience, can be assessed for Recognition of Prior Learning (RPL). Students need to provide suitable evidence which may include examples of their work, a resume outlining their work history, 3rd party reports from a work supervisor. This may reduce the amount of time taken to complete the course. RPL assessments can only take place after the student has enrolled in the course. RPL assessments take place at the beginning of the course, before training commences. If you are unsure if you have suitable evidence for RPL this can be discussed with your Course Coordinator during your course orientation interview. Normal fees apply for RPL assessments.

Credit Transfer

If you have completed prior study within the VET sector and have already completed units listed in this course, credit transfer may be available. Due to the clustered method of delivery, there is no discount for credit transfers for this Short Course. (Discounts for Credit Transfer are available when enrolling in the Certificate IV in Kitchen and Bathroom Design (MSF40318).

It is recommended that if you have credit transfers for this course, you contact DTA to discuss with a Course Advisor prior to enrolment to ensure this is the most suitable course choice for you.

Resources

Students need access to:

A computer, either a Windows PC* OR a MAC** (see details below)	
Microsoft Office or equivalent	
Google account (free)	
High speed internet connection	
Smart phone with camera	
Stationery as required eg. pens, mechanical pencil, eraser, notepad, A4 paper and A3 paper, adhesives	
Printer and scanner	
Colour swatches and samples of products and materials suitable for a kitchen or bathroom	
Simulated projects using pretend or real clients, engagement with suppliers and access to residential homes including kitchens and bathrooms, along with pretend clients.	
CAD Software	
*Computer requirements - Windows	
Processor	Minimum 1 GHz, recommended 2+ GHz
RAM	Minimum 4 GB RAM, recommended 8 GB RAM
Hard Disk Space	Minimum 500MB, recommended 700MB of available hard-disk space
TCP/IP	Only IPv4 is supported. IPv6 is currently not supported
Operating System	Windows® 8.1, Windows 10
Video Card	3D class video card with minimum 500 MB, recommended 1 GB of memory or higher and support for hardware acceleration. Please ensure that the video card driver supports OpenGL 3.1 or higher.
Software	64 bit version of Windows Microsoft Internet Explorer 9.0 or higher NET Framework version 4.5.2. (This can be downloaded for free if required)
Other	3 button scroll wheel mouse

How to source:

Home or workplace	
Home or workplace	
Home or workplace	
Stationery Supplier (eg. Officeworks)	
Home, workplace or through a local Stationery or print outlet (eg. Officeworks)	
Freely available from Industry suppliers (You will be provided with a list of suggestions)	
Students can use their own home or that of friends, family and neighbours as sites and an English speaking adult as a pretend client for simulated projects. DTA can assist in putting you in touch with suppliers.	
Students will need access to Sketchup Pro to undertake CAD training. A student licence is available at a cost of \$93.50 for 12 months (at the time of publication). DTA will advise how to access this licence.	
**Computer requirements - MAC	
Processor	Minimum 2.1+ GHz Intel™ processor
RAM	Minimum 4 GB RAM, recommended 8 GB RAM
Hard Disk Space	Minimum 500 MB, recommended 700 MB
Operating System	Mac OS 10.16+ (Big Sur), Mac OS 10.15+ (Catalina) and Mac OS 10.14+ (Mojave)
Video Card	3D class video card with minimum of 500MB, recommended 1 GB of memory or higher and support for hardware acceleration. Please ensure that the video card driver supports OpenGL version 3.1 or higher and is up to date
Other	Safari 3 button scroll wheel mouse Please be aware, SketchUp is unable to support case sensitive hard drives with our installation. If you use a case sensitive hard drive you'll experience crashes at launch which cannot be resolved.



Contact Us

P: 1300 850 725

E: info@designertraining.edu.au

