

# DESIGN ESSENTIALS FOR MODULAR KITCHENS



16 weeks part time or  
8 weeks full time

Nationally Accredited Units of Competency



Distance Education

## About the Course

This course is focused on the design and documentation of modular kitchens. You will learn about elements and principles of design, design trends, styles and technologies. From undertaking the Client interview and developing a design checklist, you will plan, document and present modular kitchen concepts. This includes learning about industry standard sizes and conventions in the construction of cabinets and components, kitchen layouts and work zones and product knowledge to apply to the selection of materials. Rendered models are developed using 3D CAD. 2D CAD is used to develop a floor plan considering industry drawing conventions. This course will equip you to respond to the challenges of a design project and techniques to present your ideas to the client.

## Fees and Payment

Administration Fee:	\$200
Course Fee:	\$1,765
<b>Total Fees:</b>	<b>\$1,965</b>

\$375 is paid with enrolment form and the remainder of the course fees are paid by Payment Plan in instalments, either once per month or twice per month for 3 months.

## Course Commencement

Courses start on the 1<sup>st</sup> Monday of each month. Please check with the DTA office to confirm the availability of dates.

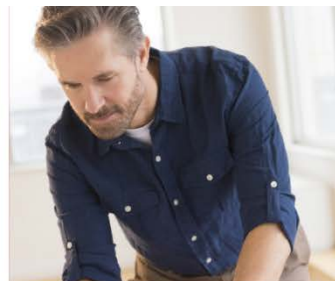
## Who would do this course?



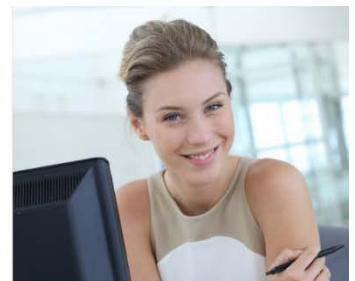
**Interior Designers or Interior Decorators** who design modular kitchens who would like to learn more about kitchen design



**Cabinet Makers and Builders** wanting to expand their design knowledge and/or get a recognised design credential



**Experienced Kitchen Designers** looking to expand their skills and credentials



Those with an interest in designing residential interiors wanting to enter a rewarding industry or for personal interest

## Entry Requirements

- » Suitable for those with no industry experience and those with years of experience
- » Must be 18 years or older and residing in Australia
- » Must not be on a Student Visa
- » Year 10 (or equivalent) level English and basic maths calculations and measurements
- » Computer literate in basic Microsoft or equivalent programs

## Delivery Mode and Duration

This course is delivered by distance education. There is no face to face class attendance. Students can be located anywhere in Australia.

Option	Duration	Hours per week
Part time	16 weeks	12 hours
Full time	8 weeks	24 hours

Students can progress at their own pace and if they have more time available, they could finish earlier.

The amount of time spent by individual students will vary depending on their existing skills and knowledge. Experienced designers may take less time and those new to the industry may choose to participate in optional activities to learn and practice new skills.



## Course Outcomes

Upon successful completion of this course, participants can either:

- » Continue your study before the end of your enrolment period by enrolling in the Certificate IV in Kitchen and Bathroom Design (MSF40318) with DTA and receive 3 direct credit transfers and full credit for fees paid, or
- » Be awarded a Statement of Attainment for the units completed which can be used as direct credit for a range of Nationally Accredited courses such as the Diploma of Interior Design, the Certificate IV in Interior Decoration and the Certificate IV in Kitchen and Bathroom Design.

## Course Content

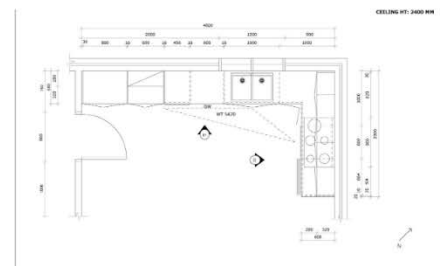
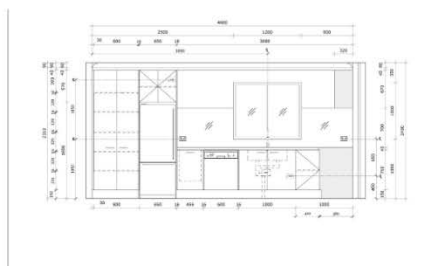
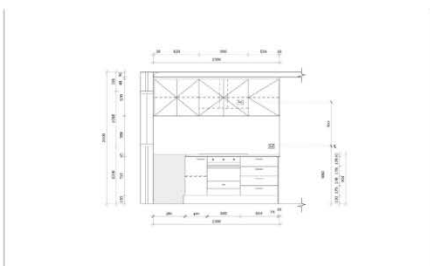
This course includes the following units of competency, and Design Documentation for Kitchens and Bathrooms.

- » BSBDES303 Explore and apply the creative design process to 3D forms
- » BSBDES401 Generate design solutions
- » MSFKB3009 Provide advice on modular kitchens

## Design Documentation for Kitchen and Bathrooms

All students learn 3D CAD and 2D CAD (also known as CADD which stands for Computer Aided Design and Drafting) as a communication tool to be used and assessed throughout the course. This focuses on the application of Australian Drafting Standards specific to Kitchens and Bathrooms and is applied to documentation submitted throughout the course.

- » **3D CAD for Kitchens and Bathrooms** includes concept drawings in 3D including renders and video fly-throughs
- » **2D CAD for Kitchens and Bathrooms** includes orthographic drawings including floorplans, elevations, sections and mechanical plans



## Support

Your Course Coordinator is your first point of contact and can direct you to a support option to suit your learning style and needs.

Your Course Coordinator can be contacted by phone and email to provide support. They may also further assist by directing you to:

- » learning resources which may include video, text, images, case studies, diagrams, graphics, webinars or explanatory information
- » book a time with a trainer to discuss or explain (10 or 20 minute sessions available weekdays).

## Learning

- » accessing information and application of learning in self directed study time. This may include reading through resources, completing learning activities conducting independent research
- » electronic resources are provided online which may include video, text, images, case studies, diagrams, graphics or explanatory information
- » pre-recorded video classes you can watch at a time to suit you
- » resources can be printed at home if required
- » private phone tutorials
- » private remote classes with a trainer where the trainer can also access your computer if required

## Assessment

You will be assessed in the following ways throughout the course:

- » written assessments which may include multiple choice and short answer questions
- » project assessments which may include written reports, design documentation and portfolio of work
- » CAD assessments which may include drawings, renders and electronic files
- » observation assessments where the student makes a video and or audio recording of them undertaking an activity
- » all assessments are submitted via the DTA dropbox

## Recognition of Prior Learning

Skills and knowledge through either previous training or experience, can be assessed for Recognition of Prior Learning (RPL). Students need to provide suitable evidence which may include examples of their work, a resume outlining their work history, 3<sup>rd</sup> party reports from a work supervisor. This may reduce the amount of time taken to complete the course. RPL assessments can only take place after the student has enrolled in the course. RPL assessments take place at the beginning of the course, before training commences. If you are unsure if you have suitable evidence for RPL this can be discussed with your Course Coordinator during your course orientation interview. Normal fees apply for RPL assessments.

## Credit Transfer

If you have completed prior study within the VET sector and have already completed units listed in this course, credit transfer may be available. Due to the clustered method of delivery, there is no discount for credit transfers for this Short Course. (Discounts for Credit Transfer are available when enrolling in the Certificate IV in Kitchen and Bathroom Design (MSF40318).

It is recommended that if you have credit transfers for this course, you contact DTA to discuss with a Course Advisor prior to enrolment to ensure this is the most suitable course choice for you.

# Resources

## Students need access to:

A computer, either a Windows PC\* OR a MAC\*\* (see details below)  
 Microsoft Office or equivalent  
 Google account (free)  
 High speed internet connection  
 Smart phone with camera  
 Stationery as required eg. pens, mechanical pencil, eraser, notepad, A4 paper and A3 paper, adhesives

Printer and scanner

Colour swatches and samples of products and materials suitable for a kitchen or bathroom

Scale ruler (1:20, 1:50 and 1:100)

Tape measure eg. Stanley FatMax 8m

Angle finder eg. Craftright 300mm Digital Angle or equivalent

Laser measure eg. Bosch PLR 40C Laser Range Finder or equivalent

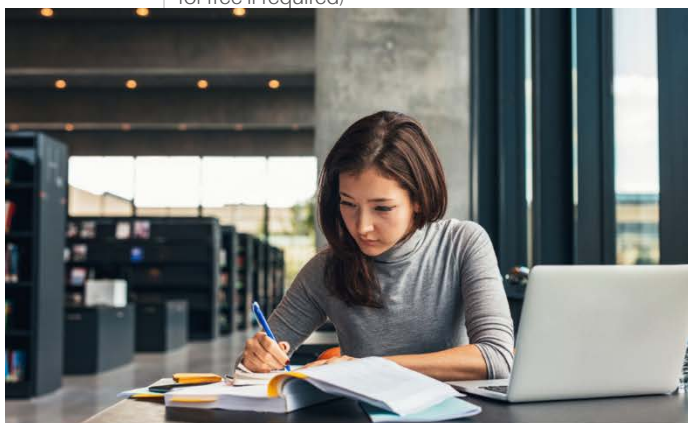
Spirit level eg. Kincrome 230mm Magnetic Torpedo or equivalent

Simulated projects using pretend or real clients, engagement with suppliers and access to residential homes including kitchens and bathrooms, along with pretend clients.

CAD Software

### \*Computer requirements - Windows

Processor	1st Gen Intel Core or compatible processor with SSE4.2 support (x64)
RAM	Minimum 8 GB RAM, recommended 16 GB RAM
Hard Disk Space	Minimum 2GB, recommended 12GB (includes additional downloadable content)
TCP/IP	Only IPv4 is supported. IPv6 is currently not supported
Operating System	Windows® 8.1, Windows 10
GPU Support	Maxwell-, Pascal-, Volta- and Turing-based NVIDIA card(s) with latest video driver or at least version 411.31 Graphic card with DirectX 11 or DirectX 12 and Shader Model 5.0 capabilities
Video Card	3D class video card with minimum of 512MB, recommended 1 GB of memory or higher and support for hardware acceleration. Please ensure that the video card driver supports OpenGL 3.1 or higher and is up to date
Other	Microsoft Internet Explorer 9.0 or higher 3 button scroll wheel mouse NET Framework version 4.5.2. (This can be downloaded for free if required)



## How to source:

Home or workplace

Home or workplace

Home or workplace

Stationery Supplier (eg. Officeworks)

Home, workplace or through a local Stationery or print outlet (eg. Officeworks)

Freely available from Industry suppliers (You will be provided with a list of suggestions)

Stationery Supplier (eg. Officeworks) or Hardware Supplier (eg. Bunnings)

Hardware Supplier (eg. Bunnings)

Hardware Supplier (eg. Bunnings)

Hardware Supplier (eg. Bunnings)

Hardware Supplier (eg. Bunnings)

Students can use their own home or that of friends, family and neighbours as sites and an English speaking adult as a pretend client for simulated projects. DTA can assist in putting you in touch with suppliers.

Students will need access to Sketchup Pro to undertake CAD training. A student licence is available at a cost of \$93.50 for 12 months (at the time of publication). DTA will advise how to access this licence.

### \*\*Computer requirements - MAC

Processor	1st Gen Intel® Core™ or compatible processor with SSE4.2 support (x64)
RAM	Minimum 8 GB RAM, recommended 16 GB RAM
Hard Disk Space	Minimum 2GB, recommended 12GB (includes additional downloadable content)
TCP/IP	Only IPv4 is supported. IPv6 is currently not supported
Operating System	Apple® macOS 10.10.x or higher
Video Card	3D class video card with minimum of 500MB, recommended 1 GB of memory or higher and support for hardware acceleration. Please ensure that the video card driver supports OpenGL version 3.1 or higher and is up to date
Other	Safari 3 button scroll wheel mouse



## Contact Us

P: 1300 850 725

E: [info@designertraining.edu.au](mailto:info@designertraining.edu.au)